

The Range

Clover's colour-coded system for the easy training of cleaning staff



The Range

Colour-coded system for the easy training of cleaning staff

This innovative new range of products has been developed by Clover Chemicals Ltd especially for companies employing large numbers of cleaning staff, such as contract cleaners and hotel groups. The IT range is so named because it has been designed to simplify the **Information Transfer** to users, making the training of staff significantly easier. The unique features of the range are its **colour-coded products** and **clear, pictorial labels**. Featuring seven highly effective products that cover the cleaning of surfaces, floors and sanitary areas, the IT range is ideal for daily contract cleaning in offices, hotels, schools, leisure centres and many other establishments.



Simplifies staff training

The training of cleaning staff is made significantly easier with the IT range, even where potential language barriers exist. Users can be taught to select the correct product for a particular task simply by looking at the product's colour: blue for interior cleaning, green for floors, red for sanitary areas and yellow for surface sanitising. This colour-coding system is already well established in most European countries, and will therefore aid any non-English speakers with product selection.



Improves standards of cleaning

The colour-coding and label design used in the IT range help to ensure that the products are used for their correct application, thus achieving optimum results. The colour-coding can also be extended to the equipment used to apply the products in each different area, therefore minimising the risk of cross-contamination.



Simplifies stocking and reordering

A basic range of three or four products from the IT range is all that is needed for all-round effective daily cleaning. This eliminates the need to buy and stock numerous different types of product.



Multi-lingual Pictogram Guides

Multi-lingual pictogram guides are available on Clover's website in most European languages.

Floors

Washrooms

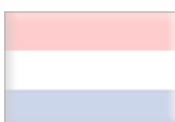
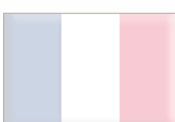
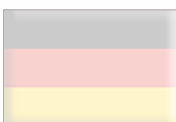
Sanitise

Interiors



The benefits of it...

- **Colour-coded labels and liquids, in line with European system** - European cleaners will recognise each product's area of use from its colour, simplifying training.
- **Extensive use of EU-recognised pictograms on labels** - overcomes any potential language barrier when training foreign staff.
- **Multi-lingual pictogram guides** are available on Clover's website in most European languages as an additional training aid.
- **Effective products** - low residue for excellent results on modern surfaces.
- **Surface safe products** - specially selected to minimise any risk of damage.
- **Low hazard potential to operatives.**
- **Standard dilution rate** for all products for ease of use - 1 pelican pump per trigger spray, 4 pelican pumps per bucket.
- **Simplistic range** - just 4 products cover all general daily cleaning of surfaces, floors and washrooms.
- **Can integrate with colour-coded mops, buckets and cloths** to offer a whole system.



The it Range

Clover's colour-coded system for the easy training of cleaning staff

CLEANit

Offices Doors Chairs Tables Windows

Interior Cleaner

Method of use

Wet Wiping Spray Cleaning

scanit

Health & Safety
Warning
 Causes serious eye irritation. Keep out of reach of children. Wear protective gloves, eye protection.

CLEANit

Offices Doors Chairs Tables Windows

Interior Cleaner (ready to use)

Method of use

Spray Cleaning

scanit

Health & Safety
 Keep out of reach of children. IF IN EYES: Rinse cautiously with water for several minutes. Remove contact lenses, if present and easy to do. Continue rinsing.

FLOORit

PVC/Linoleum Marble Wood Laminate Polished

Floor Cleaner

Method of use

Mopping

scanit

Health & Safety
Danger
 Causes serious eye damage. Keep out of reach of children. Wear eye protection.

TOPit

Desks Worktops Fridges Sinks Ovens

Sanitising Cleaner

Method of use

Spray Cleaning

scanit

Health & Safety
Danger
 Causes skin irritation. Causes serious eye damage. Harmful to aquatic life with long lasting effects.

SCALEit

Sinks Toilets Urinals Walls Tiles

Sanitary Cleaner/Descaler

Method of use

Descaling Wet Wiping Spray Cleaning Mopping

scanit

Health & Safety
Danger
 Causes severe skin burns and eye damage. Harmful to aquatic life with long lasting effects.

FRESHnit

Sinks Toilets Urinals Walls Tiles

Sanitary Cleaner

Method of use

Wet Wiping Spray Cleaning Mopping

scanit

Health & Safety
Danger
 Causes skin irritation. Causes serious eye damage. Harmful to aquatic life with long lasting effects.

SINKit

Sinks Toilets Urinals Walls Tiles

Sanitary Cleaner (ready to use)

Method of use

Spray Cleaning

scanit

Health & Safety
 Keep out of reach of children. Wear protective gloves, eye protection. IF ON SKIN: Wash with plenty of water.

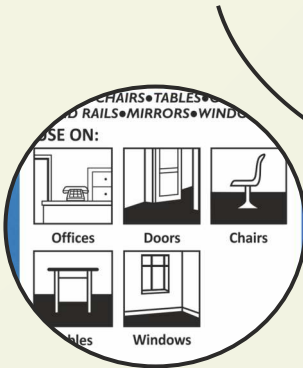


The *it* Range

Labels at a glance...

Blue product indicates it is to be used for interior cleaning.

Blue band on label matches colour of product to represent interiors.



Pictograms show which surfaces product can be used on.



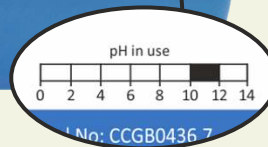
Pictograms in bottom left corner indicate how to use the product.



Boxes on right hand side show how much product to dose into trigger spray bottles and buckets for dilution.



ScanIT QR code to access the training & information portal



PH scale shows the pH of the diluted product.

1 - highly acidic
7 - neutral
14 - highly alkaline

Dilution made easy...

All the dilutable products in the IT range have the same dilution rate to simplify usage:



600ml Trigger spray:

$$= 1 \times 30\text{ml}$$

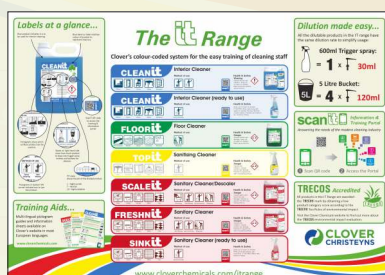


5 Litre Bucket:

$$= 4 \times 120\text{ml}$$

Wall Chart...

A2 sized Wall Chart to aid user training and a great point of reference for cleaners.



Product identification...

To aid identification of diluted product, ready-to-use labels are available for trigger bottles and self-adhesive identification SPOTS for colour coding of dosing pumps.



The Range

Distributed by:

